

# Anthony Quinn

Portfolio  
September 2024



## Suibhne in uaigneas na coille (Sweeney in the solitude of the forest)

Sweeney, a mythical Irish king who became half-man, half-bird, lived on the fringes. He perches alone on a Scribbly Gum tree adorned with twigs and feathers. Tiny cameras sprouting from the branches suggest that even in the wild, surveillance capitalism watches.

Sweeney lives on his own terms, reminding us of our need for healthy solitude amidst ever watchful surveillance technology.

Size: 13cm x 20.5cm unframed



## Imbas Forosnai (Poetic insight)

Imbas Forosnai is an old Celtic ritual that leads to poetic vision. This work explores the use of tools like smartphones and AI to tap into a deeper source of inspiration. A wild forest queen wearing the cloak of the high poet, cradles the Salmon of Knowledge and a smartphone.

Ultimately, it suggests that a balanced approach, combining traditional methods with modern technology are needed for truly inspired artistic expression.

Size: 13cm x 20.5cm unframed

[www.quirky.ink](http://www.quirky.ink)



## A blessing and a curse

The Irish myth of the Salmon of Knowledge explores our access to unprecedented data-driven machine creativity. Technology offers creative potential and often significant risk.

The work parallels the myth and the rise of AI image generators, calling for creativity with care. It is a commentary on the implications of our pursuit of endless output.

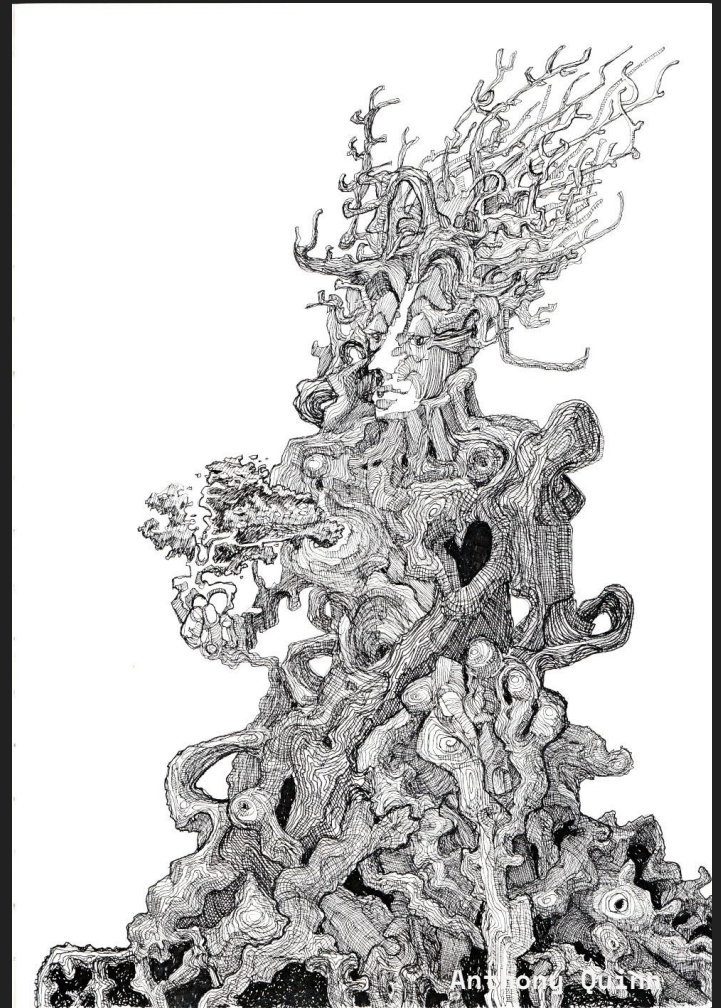
Size: 13cm x 20.5cm unframed



## Comhraiocht Mutualism

Comhraiocht is the Irish word that means 'mutualism' or 'reciprocity' and is pronounced as 'Co-ree-oct'. It's inspired by Irish folklore relating to Hawthorn (or Whitethorn) trees. Hawthorn trees are associated with death, protection, renewal and respect for other realms. It speaks to cooperation, solitude, resilience and hope.

Size:13cm x 20.5cm unframed



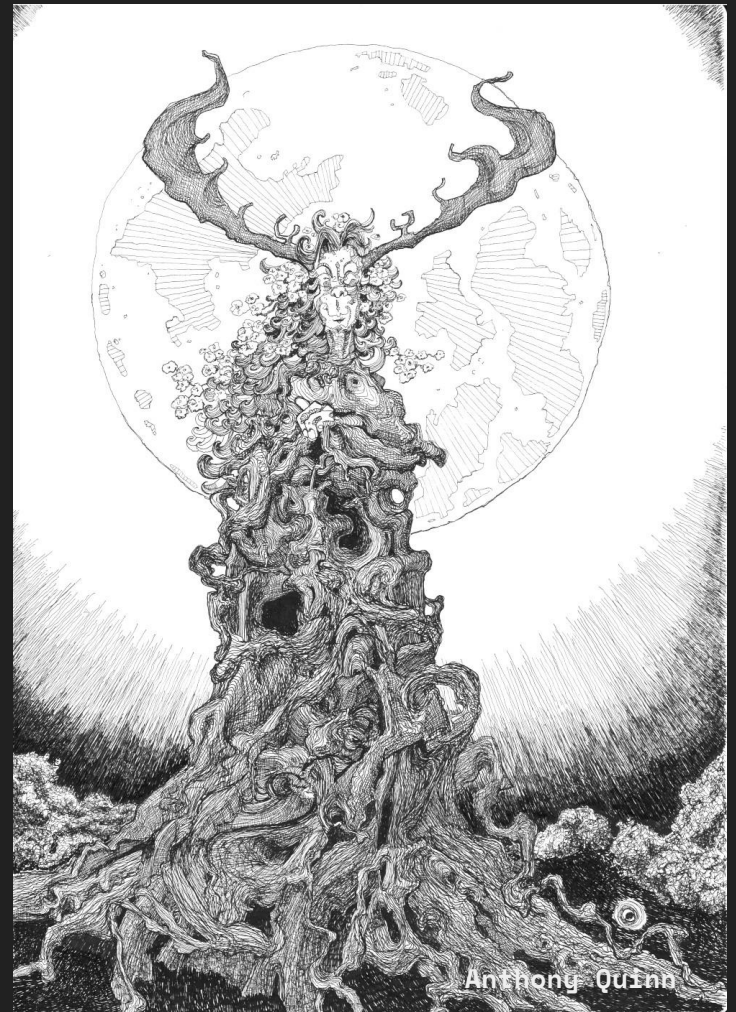
## A walk in that park

Trust, magic and transformation

A response to a short story by Mike Featherstone. A woman lost in tortured self-judgement finds her peace in a moonlit forest.

Inspired by the Irish myth of Sadhbh, who transformed between deer and human form, although not always at will, a half-human hawthorn tree represents a liminal space and a connection to the mystical. Transformation is a journey of self discovery and sometimes, surrender.

Size:13cm x 20.5cm unframed



## An Cailleach The Cailleach

The Cailleach ('Koil-yak') is a formidable figure from Irish myth. A harbinger of Winter, she commands the wind and frosts. She can transform into a bird, wolf or deer. Wizedened and ancient, she also wields the power to shape rocky landscapes bare-handed.

She leans into the change of seasons, in a mountainous cloak. Half of her wizedened face is in shadow, while her antlered crown of withered winter branches reaches for Springtime sun.

Size:13cm x 20.5cm unframed

[www.quirky.ink](http://www.quirky.ink)



**No two branches**  
An unending series

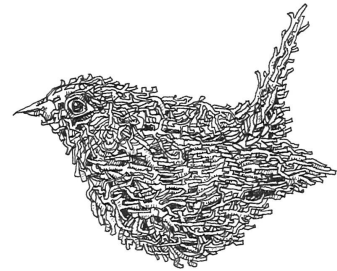
These drawings are inspired by a line from the poem 'Lost' by David Wagoner:

*No two branches are the same to wren*

No matter where we are, we are here and 'here' is ever-changing.

I make these as a perpetual series. No two are the same.

Size:13cm x 20.5cm unframed





## Myth, magic and wonder: an artistic odyssey

Anthony Quinn, artist

Imagine a childhood with history books as thrilling as comics. As a child, I devoured mythical tales like that of the legendary Fionn mac Cumhaill, who gained boundless wisdom from a magical Salmon of Knowledge.

The timeless themes and fantastical elements of Irish myth and folklore are my wellspring of inspiration. As an Irish native and Australian citizen, I respect the ancestral connection that this country's first peoples have with this land.

My intricate drawings explore how Irish myths resonate today. They range in size from postcard to A3. Technical fineliner pens are a carryover from my industrial design background. I use them to capture finely drawn, meticulous detail.

People describe my drawings as captivating and intricate. Viewers are drawn in by my considered layouts. Close inspection reveals detail that rewards deeper viewing.

Some say my work is a portal to another world, where the familiar becomes strange and sparks the imagination. There's magic, subtle darkness, or a mirror that questions without judging.

My art sparks curiosity, a sense of wonder, and hope. It is an odyssey, where curiosity opens doors and hope is a loyal companion.



## Connect with me

[Subscribe to my newsletter](#)

[Commission a unique artwork](#) that  
inspires a lifetime of joyful  
reflection, created by your  
personal artist in residence.

Say hello: [anthony@quirky.ink](mailto:anthony@quirky.ink)